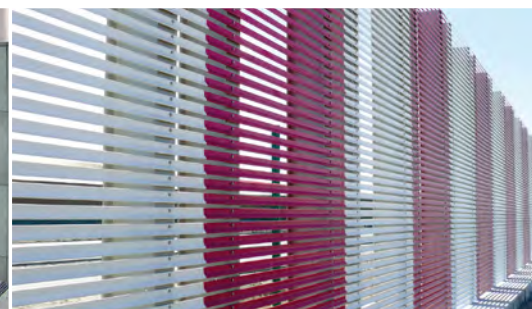


GRP-FENCES

PROTECTION, RELIABLE AND VERSATILE



GRP-FENCES

Reliable and versatile

They are mainly used where corrosion resistance and electrical insulation are required.

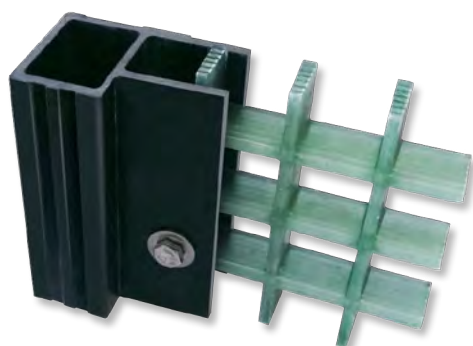
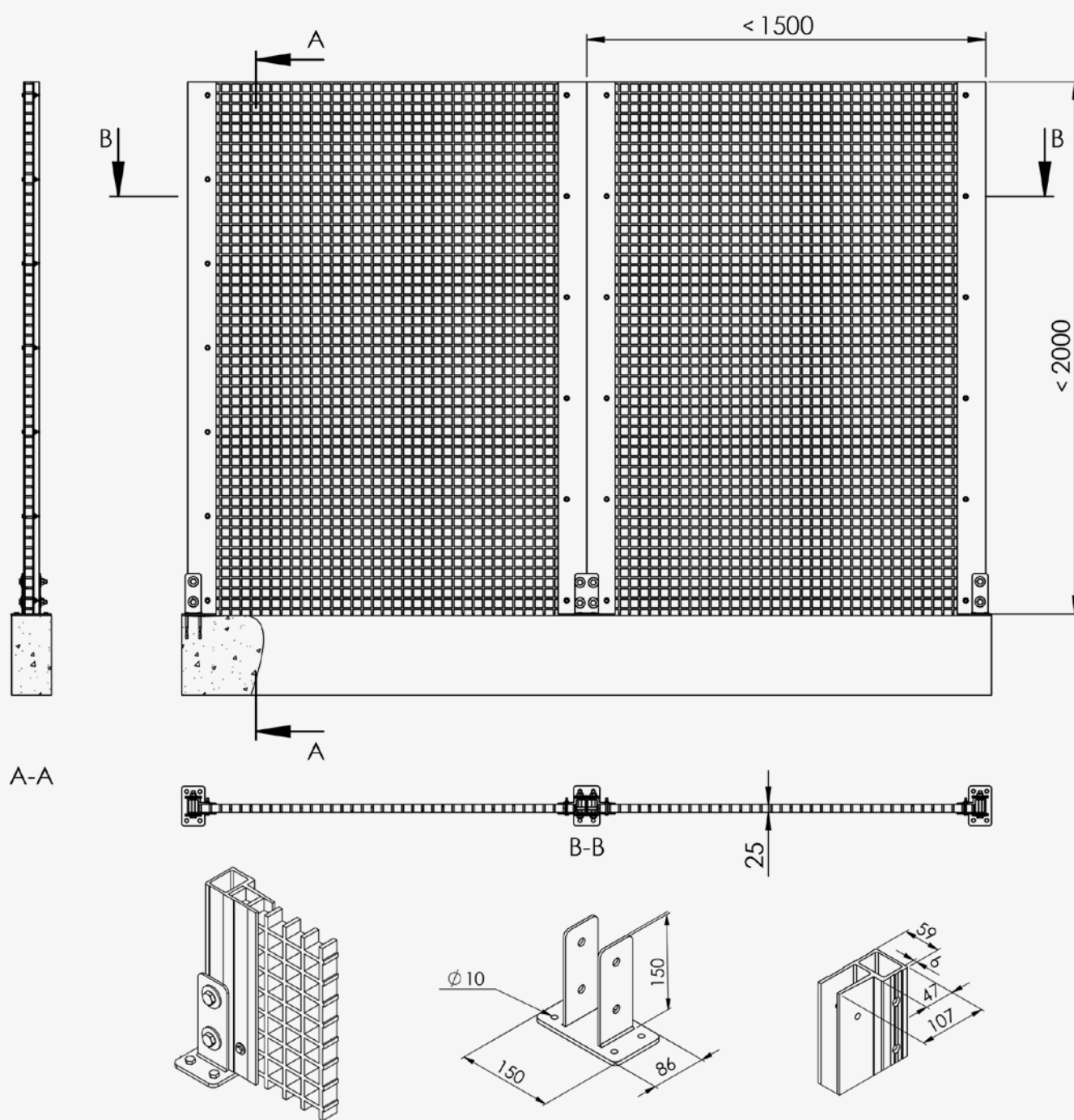
GRP fences offer protection and reliability and are also versatile, e.g. as gate elements, balcony cladding or screens. They have GFK-typical material properties such as freedom from maintenance and easy processing without special tools. A wide range of colours and different mesh designs allow creative freedom.



Advantages of GRP

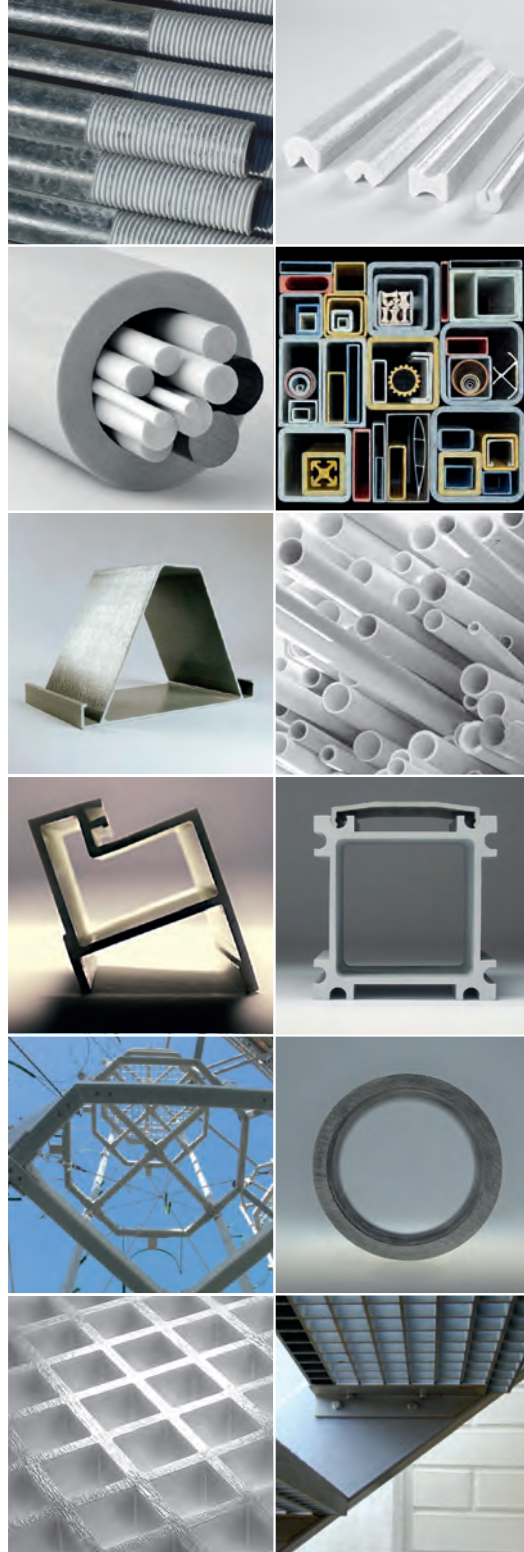
- radar-transparent
- Application range -100 °C to +180 °C
- self-extinguishing and halogen-free
- Linear stress and strain behavior
- low weight
- electrically insulating
- high chemical resistance
- corrosion and weather resistant
- UV-resistant
- high firmness
- simple assembly and short construction times
- metal-free - non-magnetic
- no electrical grounding required
- No further maintenance work necessary
- easy to machine, also on site with common hand tools
- no bones when drilling and sawing
- Indoor and outdoor use





Type	Mesh (mm)	kg/m ²	Colour
ISO 25	31x31	12,3	green: RAL 6017 / grey: RAL 7042
ISO 25	93x18	13	green: RAL 6017 / grey: RAL 7042
ISO 25	76x76	5,8	green: RAL 6017 / grey: RAL 7042

Sizes and other colours on request



FIBROLUX GMBH • HESSENSTR.16 • 65719 HOFHEIM/FRANKFURT • GERMANY
TEL: (+49) 6122 91000 • FAX: (+49) 6122 15001 • INFO@FIBROLUX.COM • WWW.FIBROLUX.COM

All data provided in this catalogue are believed to be accurate and reliable. However, we accept no responsibility for errors or omissions. Furthermore, Fibrolux accepts no responsibility for enduse application, and no performance warranty is expressed or implied. We reserve the right to revise, amend and modify the information contained herein without notice.