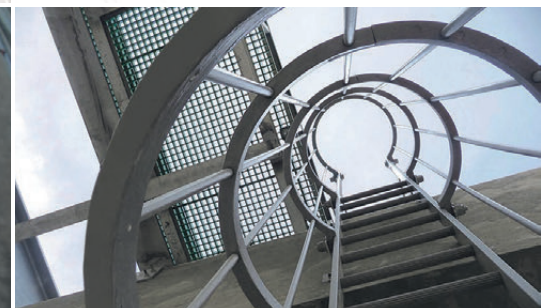


# ENGINEERING

PRODUCT, PLANNING, DESIGN – everything in one stop service





# CONSTRUCTION

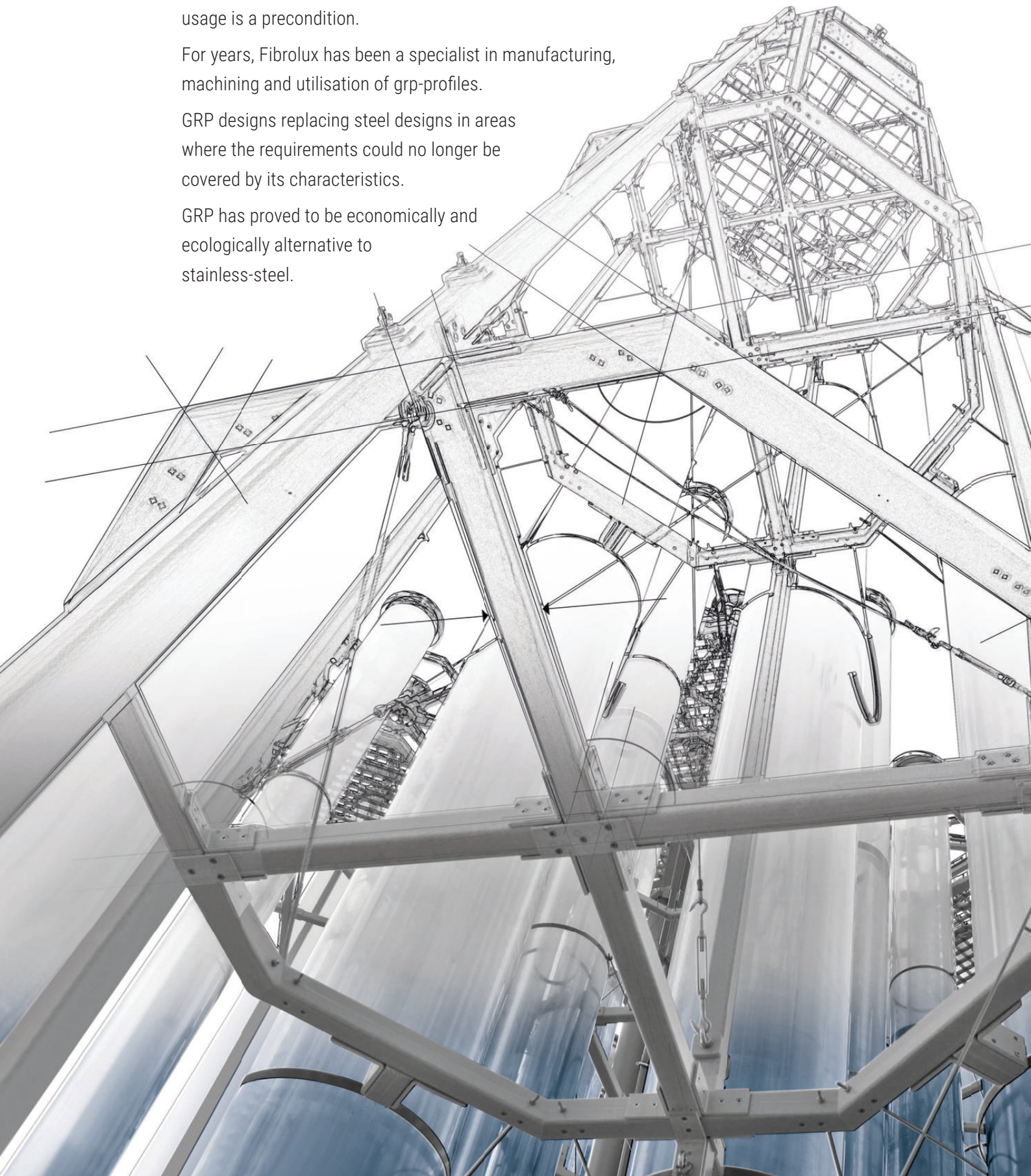
High quality materials are used in our construction designs.

To achieve an optimum performance, high skilled expertise in product usage is a precondition.

For years, Fibrolux has been a specialist in manufacturing, machining and utilisation of grp-profiles.

GRP designs replacing steel designs in areas where the requirements could no longer be covered by its characteristics.

GRP has proved to be economically and ecologically alternative to stainless-steel.





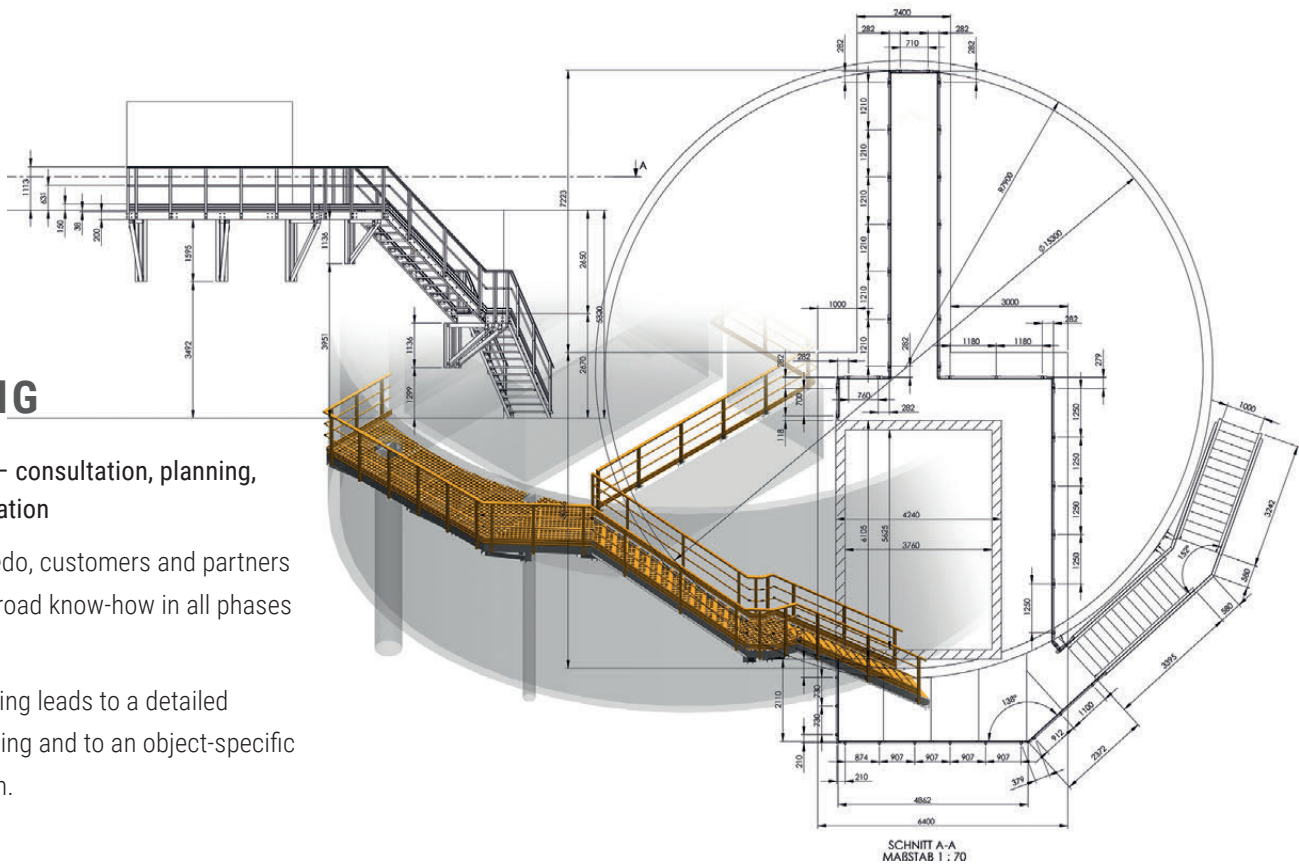


## PLANNING

A one stop shop – consultation, planning, design and realization

Thanks to this credo, customers and partners can benefit to a broad know-how in all phases of collaboration.

A strong engineering leads to a detailed thought-out planning and to an object-specific economic solution.





## FLEXIBILITY

Customer's requests will be implemented on the premise of professional performance.

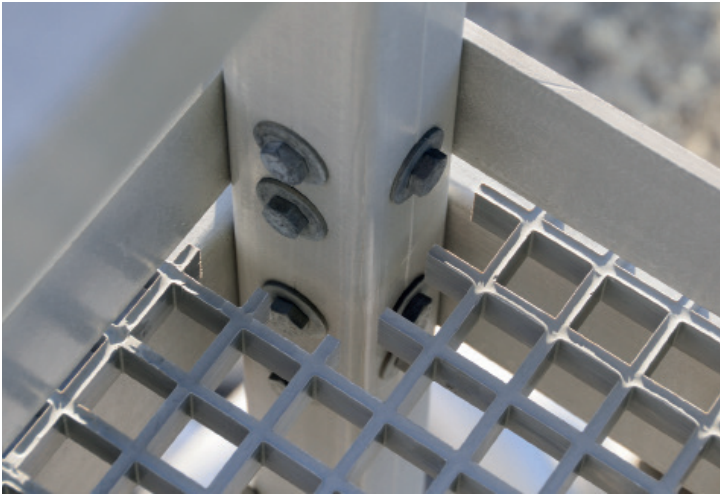
Precision and proper usage of the material are primarily considered during production and realization.

Feel free to contact us. We are delighted to help you with the fulfillment of your visions.



## CNC-MACHING

CNC machined parts will be processed with high accuracy which makes assembly on site fast and easy.





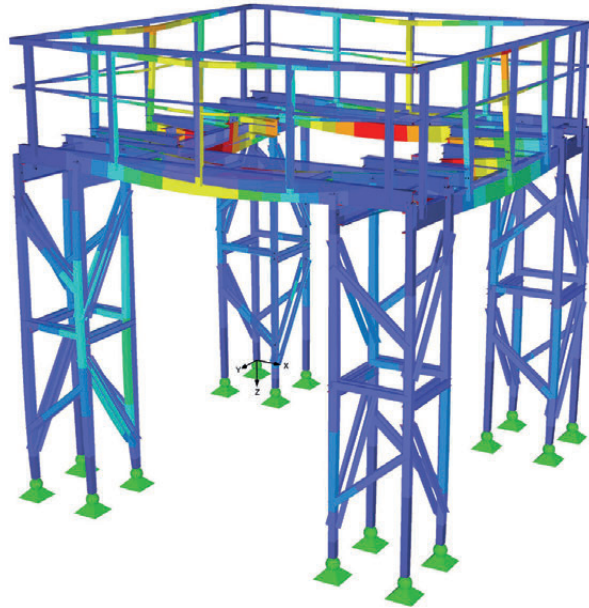
## LOAD AND STRESS ANALYSIS

FEM calculations are the foundation of our designs.

For bigger objects, CAD based frame calculations are executed to create static examinations.

We consider the anisotropy of the material and combine our experience with pure mathematical results for our design.

All projects are created using 3D-CAD designs which makes visualization easier.



3-Point Bend Test

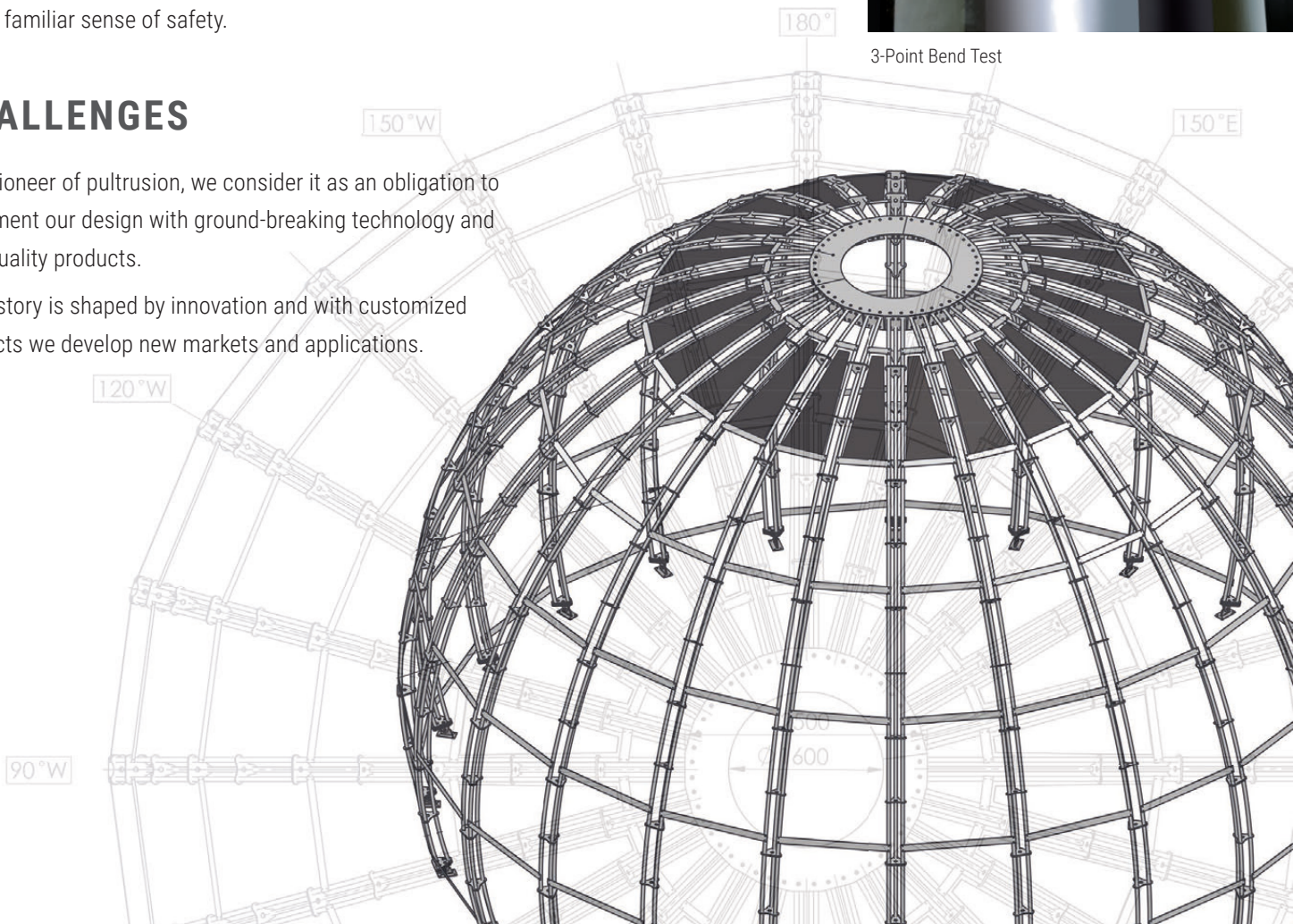
## LOAD CAPACITY

The GRP constructions are calculated and designed in such a way, that in the application, it will provide a typical steel feeling and thereby emit a familiar sense of safety.

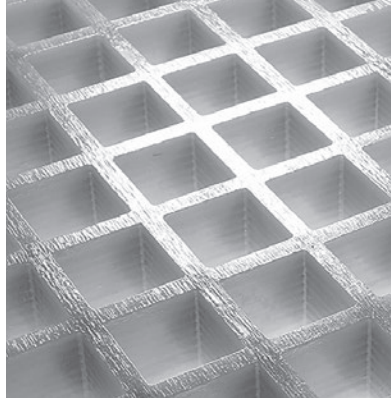
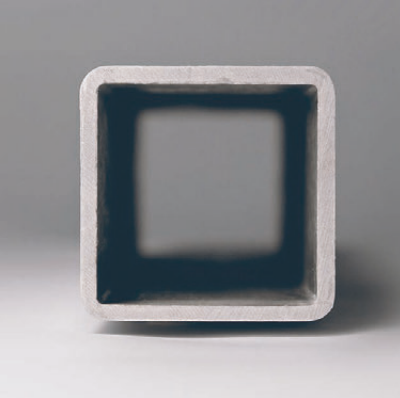
## CHALLENGES

As a pioneer of pultrusion, we consider it as an obligation to implement our design with ground-breaking technology and high quality products.

Our history is shaped by innovation and with customized products we develop new markets and applications.

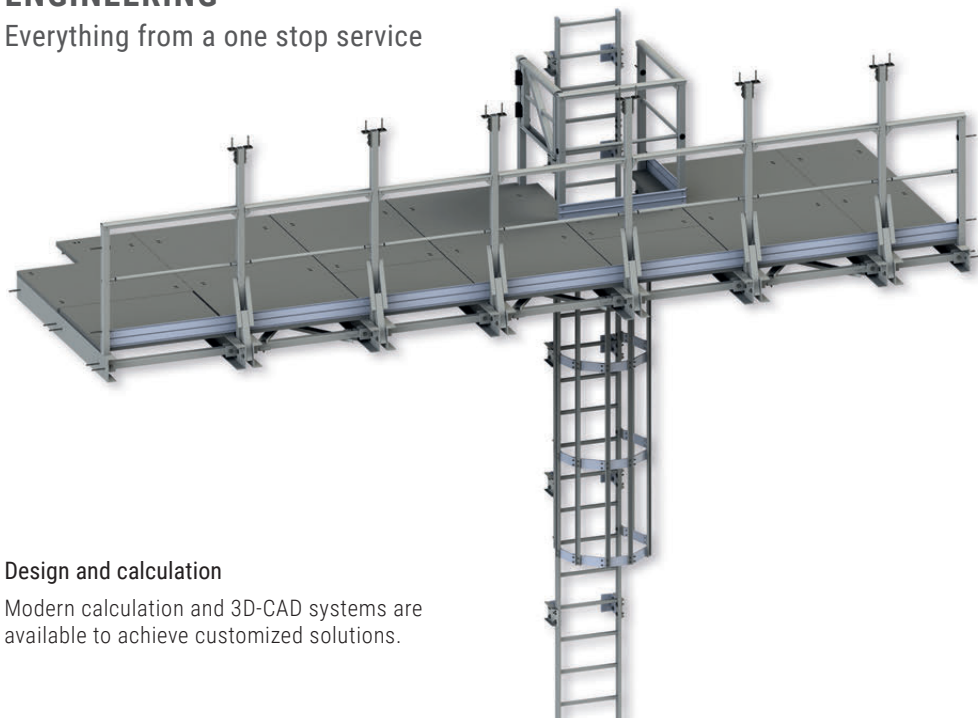






## ENGINEERING -

Everything from a one stop service

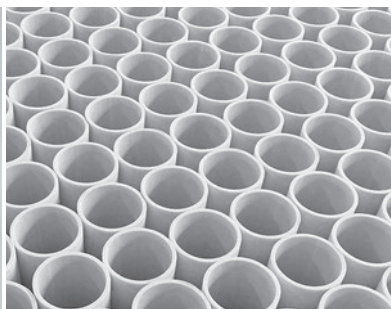
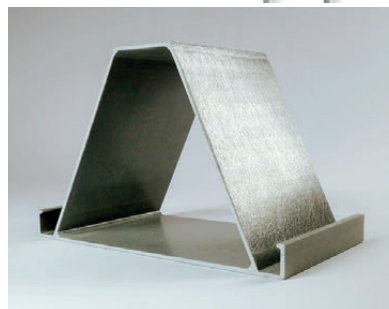


### Design and calculation

Modern calculation and 3D-CAD systems are available to achieve customized solutions.

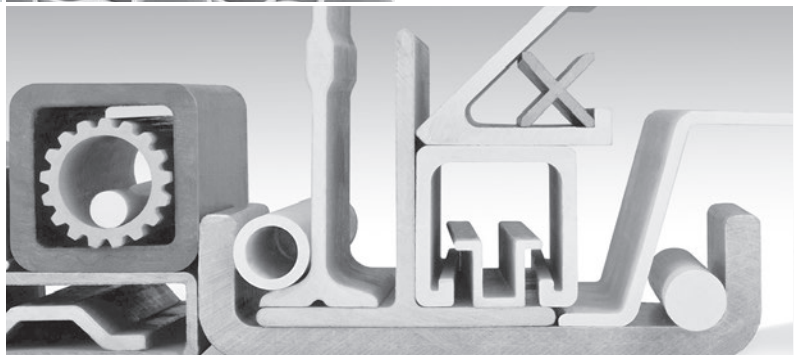
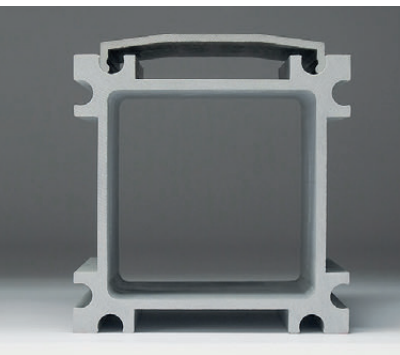


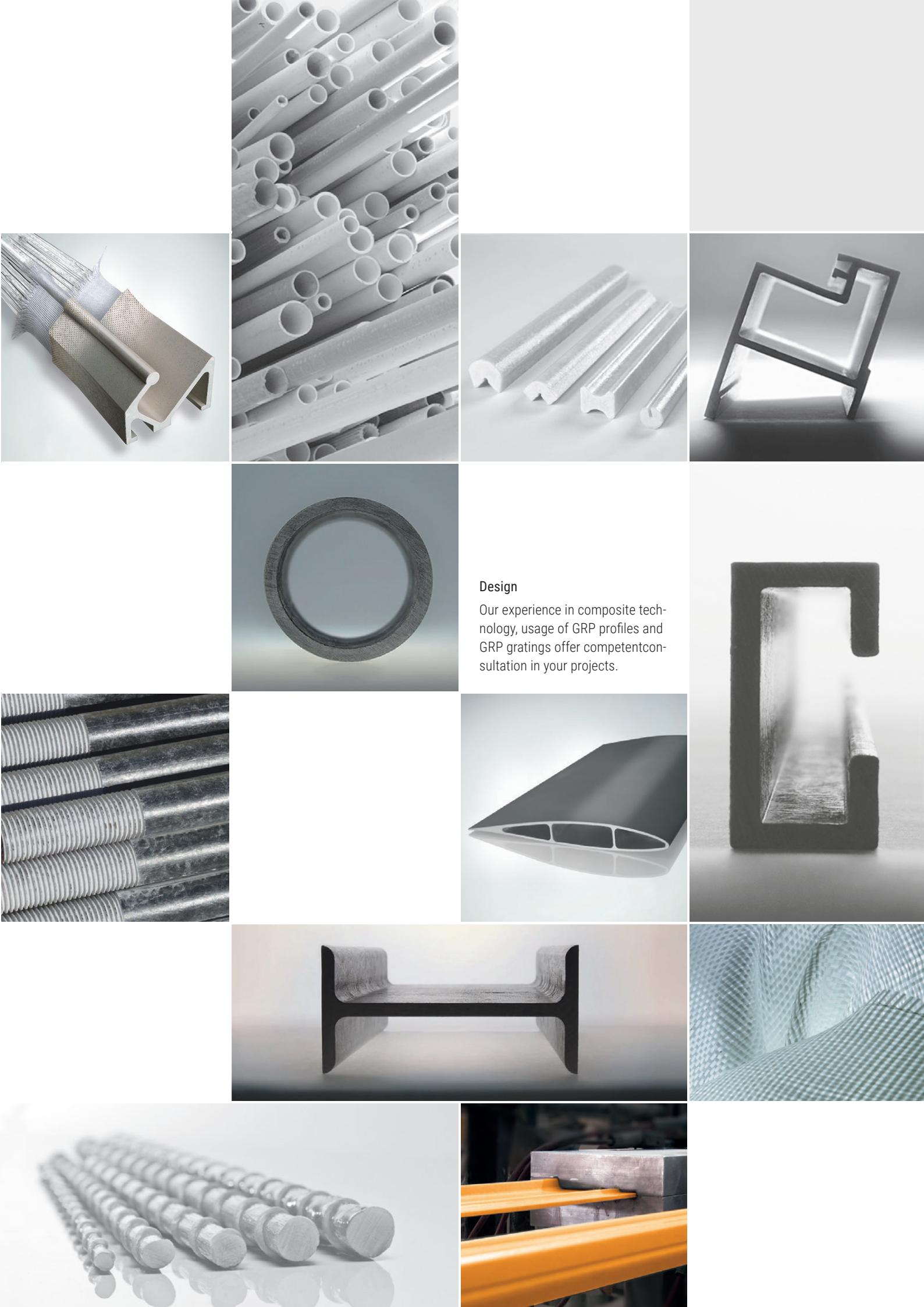
Fast and flexible implementation of construction projects since manufacturing, design, calculation and realization is in one stop shop.



### Production

Production capacity and spacious warehouses offer security and flexibility.





## Design

Our experience in composite technology, usage of GRP profiles and GRP gratings offer competent consultation in your projects.



## ADVANTAGES

easy assembly and machining |  
resistant to corrosion | heat and cold  
resistant | anti-slip | resistant to che-  
micals | electrical insulation | ther-  
mal isolation | light weight | good  
UV resistance | many colors available  
| low maintenance | high strength

## APPLICATION AREAS

Chemical industry | food industry |  
water and sewage treatment | pickling-  
and galvanic plants | marine and ship  
constructions | transport facilities  
| textile and paper industry | tunnel  
constructions | mining | petrol che-  
mistry | paint industry | offshore



FIBROLUX GMBH • HESSENSTR. 16 • 65719 HOFHEIM/FRANKFURT • GERMANY  
TEL: (+49) 6122 91000 • FAX: (+49) 6122 15001 • [INFO@FIBROLUX.COM](mailto:INFO@FIBROLUX.COM) • [WWW.FIBROLUX.COM](http://WWW.FIBROLUX.COM)

All data provided in this catalogue are believed to be accurate and reliable. However, we accept no responsibility for errors or omissions. Furthermore, Fibrolux accepts no responsibility for enduse application, and no performance warranty is expressed or implied. We reserve the right to revise, amend and modify the information contained herein without notice.