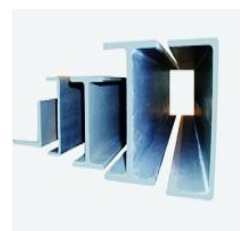
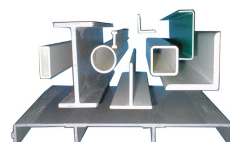
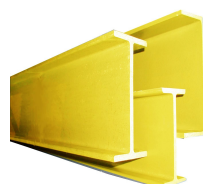
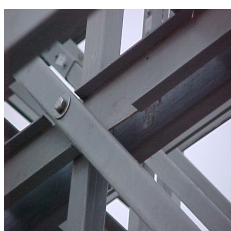
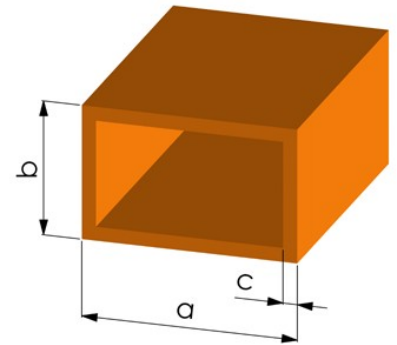


Rechteckrohre aus GFK

Rechteckrohr, mm			Widerstandsmoment, mm ³		Trägheitsmoment, mm ⁴	
a	b	c	W _a	W _b	I _a	I _b
15	15	2,4	442	442	3316	3316
15	15	2,5	451	451	3385	3385
25	20	4	1658	1355	20719	13554
25,5	25,5	3	1818	1818	23186	23186
30	10	2,5	1066	448	15990	2240
30	15	2,5	1382	847	20729	6354
30	25	3	2291	2028	34362	25345
30	30	2,5	2330	2330	34948	34948
30	30	5	3611	3611	54167	54167
35,5	35,5	5x3	4930	4930	88747	88747
36,5	27	3	3342	2723	61835	36765
38	24	2,5	2781	2076	52844	24914
38	38	3	4546	4546	86380	86380
38	38	4	5593	5593	106261	106261
40	25	5	4979	3492	99583	43646
40	36,5	3	4790	4564	95798	84436
40	40	5	7292	7292	145833	145833
44	44	6	10225	10225	224960	224960
50	30	3	5685	4120	142132	61812
50	50	3	8340	8340	208492	208492
50	50	4	10461	10461	261525	261525
50	50	5	12300	12300	307500	307500
50	50	6	13883	13883	347072	347072
58	25	3	6340	3664	183854	45799
60	20	3	5876	2765	176292	27652
60	22	3,5	6997	3485	209904	38334
60	25	3	6689	3781	200682	47260
60	30	2,5	6446	4225	193385	63385
60	60	4	15690	15690	470699	470699
60	60	5	18638	18638	559166	559166
60	60	9	27356	27356	820692	820692
64	27	4x2	7762	4460	248378	60215
70	26	3	8750	4605	306260	59860
73	25	3	12628	5857	460927	73207
73	25	3	9157	4540	334244	56756
73	25	3x6	43277	6622	484625	82786
75	40	3	12679	8700	475475	174002
75	75	6	19941	19941	747792	747792
75	75	9	46855	46855	1757050	1757050



Rechteckrohre aus GFK

Rechteckrohr, mm			Widerstandsmoment, mm ³		Trägheitsmoment, mm ⁴	
a	b	c	W _a	W _b	I _a	I _b
80	33	3	12406	7163	496246	118201
80	40	4	17783	11502	711338	230059
83	28	3	11981	5965	497193	83510
98	25	3	14854	6001	727894	75019
98	25	3,5	16948	6670	830460	83378
100	40	3	19600	11273	980012	225452
100	100	5	57317	57317	2865833	2865830
100	100	8	83688	83688	4184405	4184405
114	114	6	88674	88674	505440	5054400
114	114	8	112075	112075	6388267	6388267
114	114	10	132779	132779	7568427	7568427
120	60	5	51569	33806	3094167	1014170
125	125	6	108124	108124	6757772	6757772
130	130	6	117605	117605	7644352	7644352
130	130	7	134033	134033	8712172	8712172
130	130	9	164433	164433	10688172	10688172
160	70	3,5	71862	44415	5748992	1554512
200	100	8	230601	151571	23060139	7578539
500	200	12	2006123	1170796	501530752	117079552

